

Tumark® Family of Biopsy Site Markers

A comprehensive range of biopsy site markers

In a variety of shapes and lengths for ultrasound, stereotactic or MRI applications

High visibility, no clip migration, multi-modality, identifying multiple lesions, placing markers before or during neoadjuvant therapy. These are the most common concerns and reasons for breast biopsy marker placements and choice.

Excellent Visibility

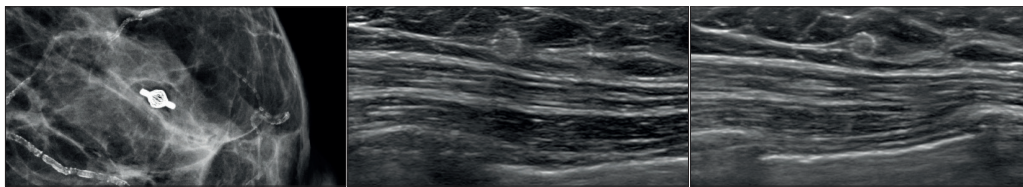
- Designed to provide **long-term ultrasound visibility**, biocompatible, non-bioabsorbable, permanent markers offering **excellent visibility under mammography** at deployment and are **designed to minimise movement**.¹
- Tumark® Vision® markers are **highly detectable in breast ultrasound**¹ and provide good visibility even in lymph nodes after NACT*.

Intelligent Design

- Ergonomic handle for single-handed operation and **intelligent design provides tissue fixation**.¹

Precision in Marking

- 18G cannula enable precise marking and ensure minimally invasive treatment.²

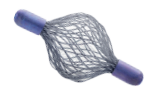


Vision marker under mammography

Vision marker under ultrasound,
3 months post deployment

Vision marker under ultrasound, 5 months
following completion of NACT (6xTCbHP)

Images courtesy of Prof. Dr. Joerg Heil, University Women's Hospital Heidelberg, Germany.



Vision



Eye



Professional X



Professional Q



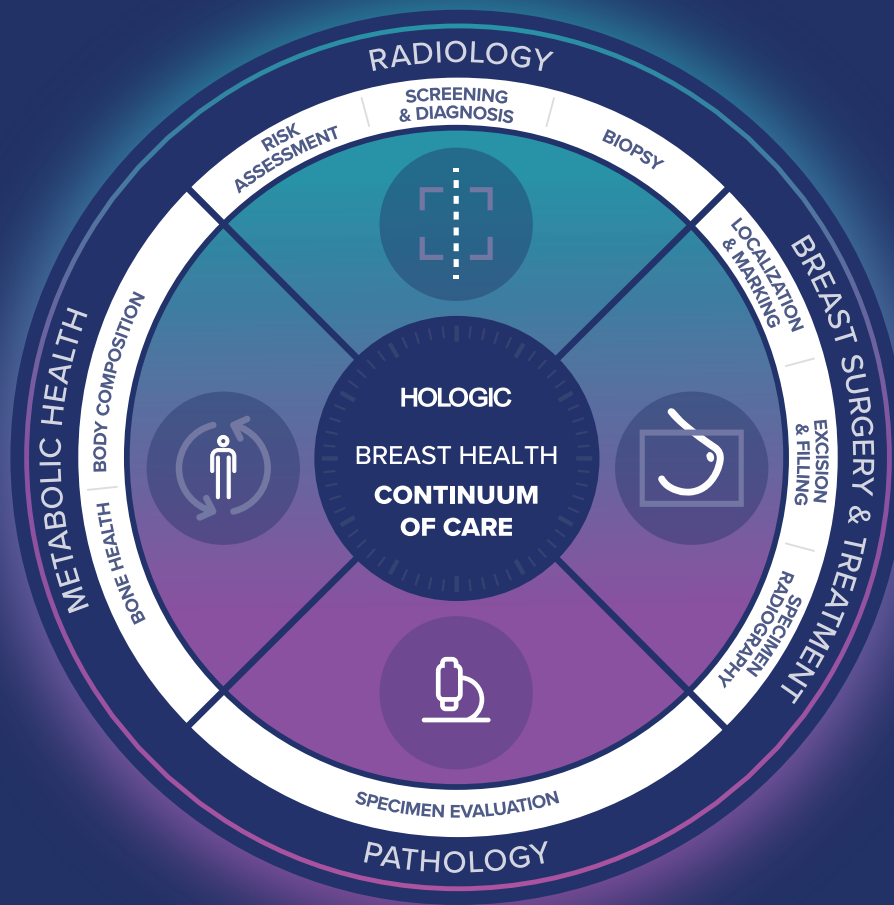
Professional U

For use with Eviva®	Description shape, length, gauge
TUMARK-E13-S-Q	Q, 132mm, 18G
TUMARK-E13-P-Q	Q, 135.5mm, 18G
TUMARK-E13-S-X	X, 129.5mm, 18G
TUMARK-E13-P-X	X, 133mm, 18G
TUMARK-E13-S-VISION	Vision, 129.5mm, 18G
TUMARK-E13-P-VISION	Vision, 133mm, 18G

For use with Brevera®	Description shape, length, gauge
TUMARK-BREV-S-Q	Q, 129.5mm, 18G
TUMARK-BREV-P-Q	Q, 125.5mm, 18G
TUMARK-BREV-S-X	X, 127.5mm, 18G
TUMARK-BREV-P-X	X, 123.5mm, 18G
TUMARK-BREV-S-VISION	Vision, 127.5mm, 18G
TUMARK-BREV-P-VISION	Vision, 123.5mm, 18G

For Ultrasound Guided Marking	Description shape, length, gauge
271510	Eye, 100mm, 18G
271512	Eye, 120mm, 18G
271559	U, 100mm, 18G
271560	U, 120mm, 18G
271589	Vision, 100mm, 18G
271590	Vision, 120mm, 18G

For MRI Guided Marking	Description shape, length, gauge
601570	U, 120mm, 18G
601590	Vision, 120mm, 18G



A Complete Continuum of Care

Achieving optimal workflow efficiency across the Breast Health Continuum of Care

Across the whole Breast Health Continuum of Care, we strive to provide our customers with the support that enables fast and effective detection, diagnosis and treatment to reduce the physical and emotional burden of breast cancer on their patients.

We are committed to develop innovative, integrated technologies and services designed to support workflow and a more efficient use of time, improving clinical experience and patient outcomes.

We continue to push the frontiers of science and technology, harnessing new AI and imaging capabilities to enable doctors, radiologists and surgeons to achieve earlier and more accurate diagnosis and treatment.

*CE approval for lymph node marking in progress.

 0482 Tumarik® Biopsy Site Markers

Breast & Skeletal Health | [Hologic.com](https://www.hologic.com) | euinfo@hologic.com

References

Hologic data on file 1. DHM-06169, Rev 001. * Based on Tumarik® Data Collection Study, 3 clinicians at 3 hospitals for 90 marker placements, 2017. 2. MISC-07876, attachment 2.ECO-52032_SUP_01, ECO-52032_SUP_02 Tumarik IFU.

SS-01597-EUR-2101 Rev 002 © 2025 Hologic Inc. All rights reserved. Hologic, Tumarik, Eviva, Brevera, The Science of Sure and associated logos are trademarks and/or registered trademarks of Hologic, Inc. and/or its subsidiaries in the United States and/or other countries. This information is intended for medical professionals and is not intended as a product solicitation or promotion where such activities are prohibited. Because Hologic materials are distributed through websites, eBroadcasts and tradeshow, it is not always possible to control where such materials appear. For specific information on what products are available for sale in a particular country, please contact your local Hologic representative or write to euinfo@hologic.com